

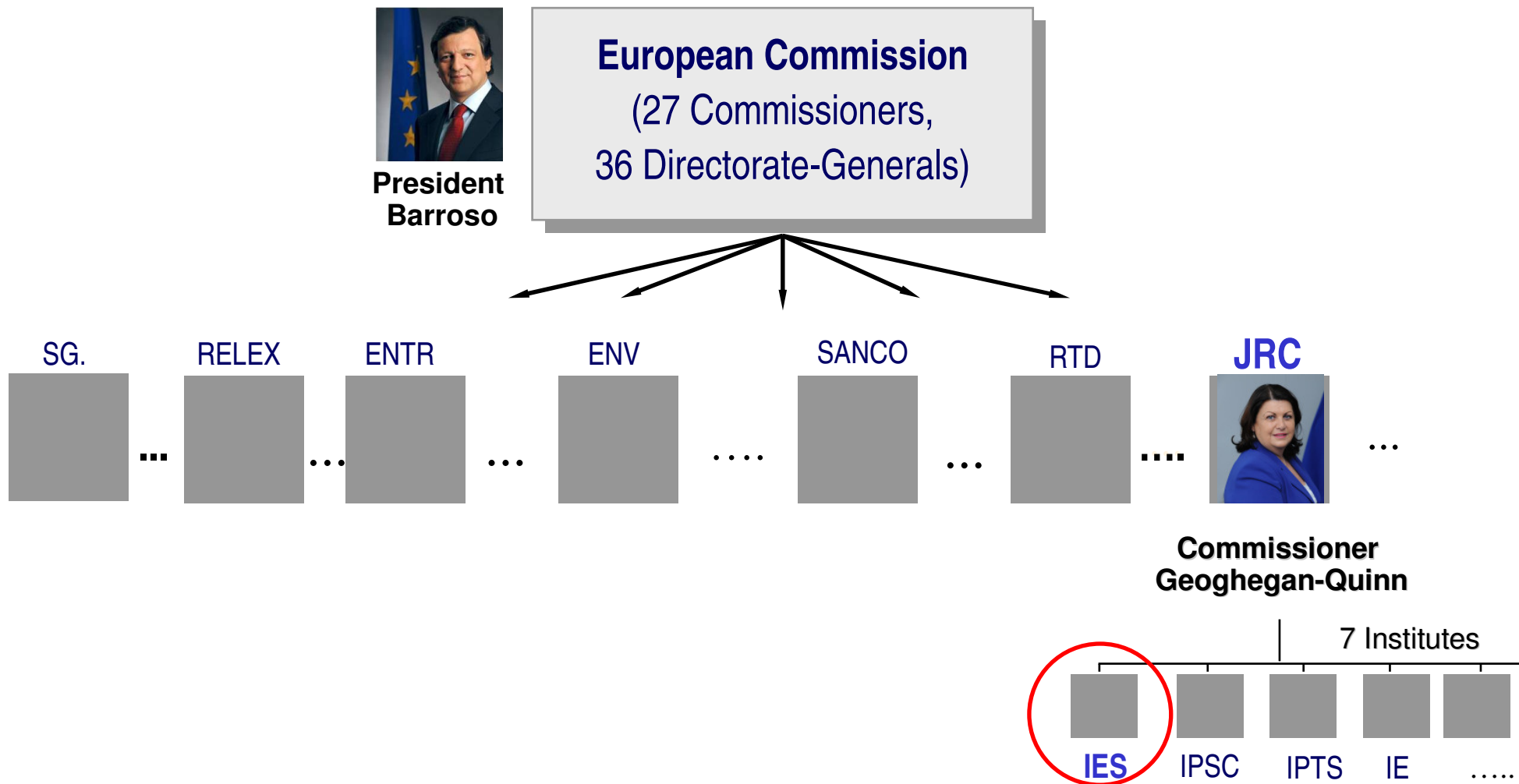
# Towards the EU framework methodology for the environmental assessment of food and drink products

**David Pennington**, Camillo De Camillis, Miguel Brandão, Ioannis Arzoumanidis, Rana Pant, Marc-Andree Wolf, Kirana Chomkhamsri, Malgorzata Goralczyk, Simone Manfredi, Fulvio Ardente, Cristina de la Rua, Serenella Sala

European Commission, Joint Research Centre (JRC),  
Institute for Environment and Sustainability (IES),  
[Sustainability Assessment Unit](#)

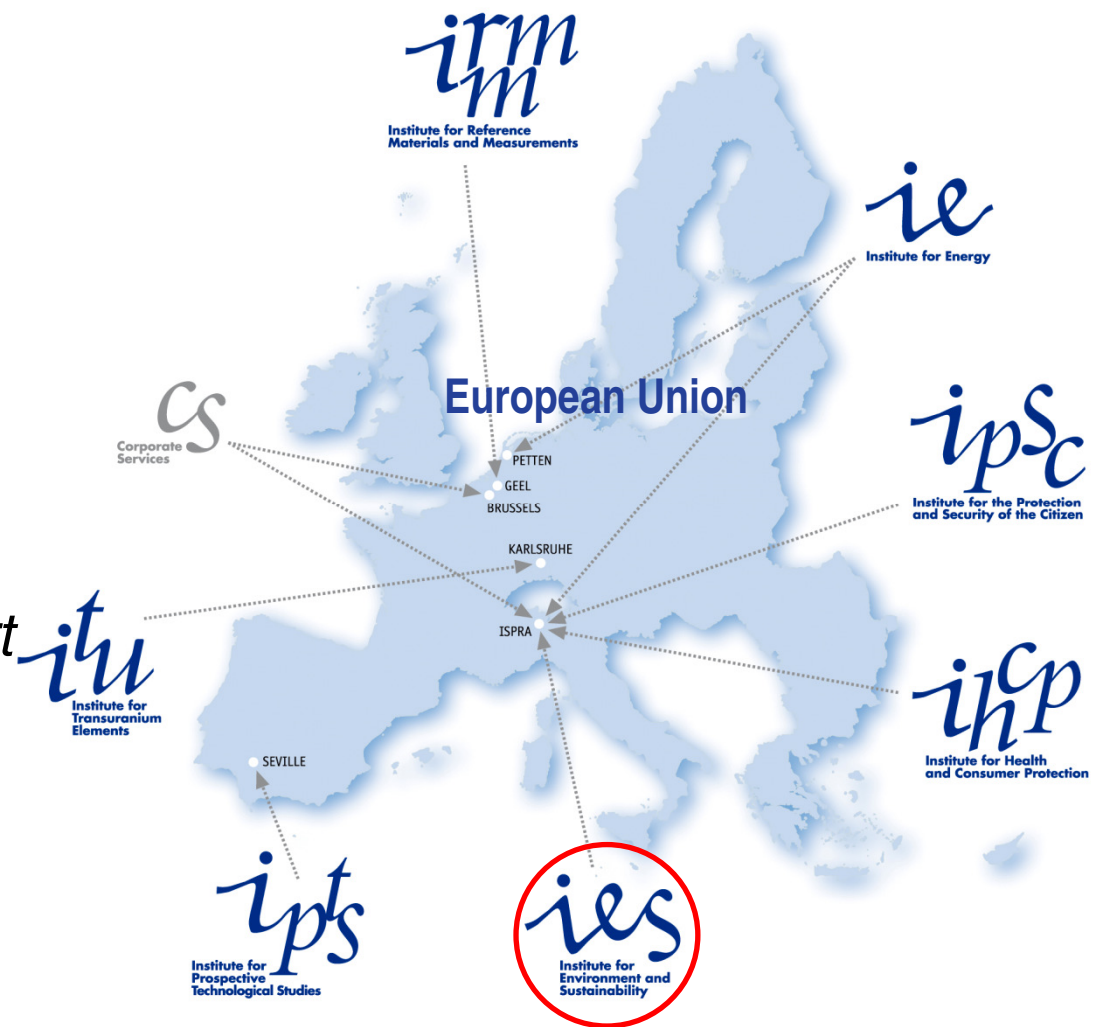
# Overview

1. European Commission, Joint Research Centre
2. Business and government needs
3. EC general support examples
4. European Food SCP Round Table
5. Benefits
6. Involvement



# European Commission, Joint Research Centre (JRC), Institute for Environment and Sustainability (IES)

*“The mission of the IES is to provide scientific-technical support to the European Union's policies for the protection and sustainable development of the **European and global environment**”*





## Resources



Energy



Material Scarcity



Land Use



## Health and Environment



Climate Change

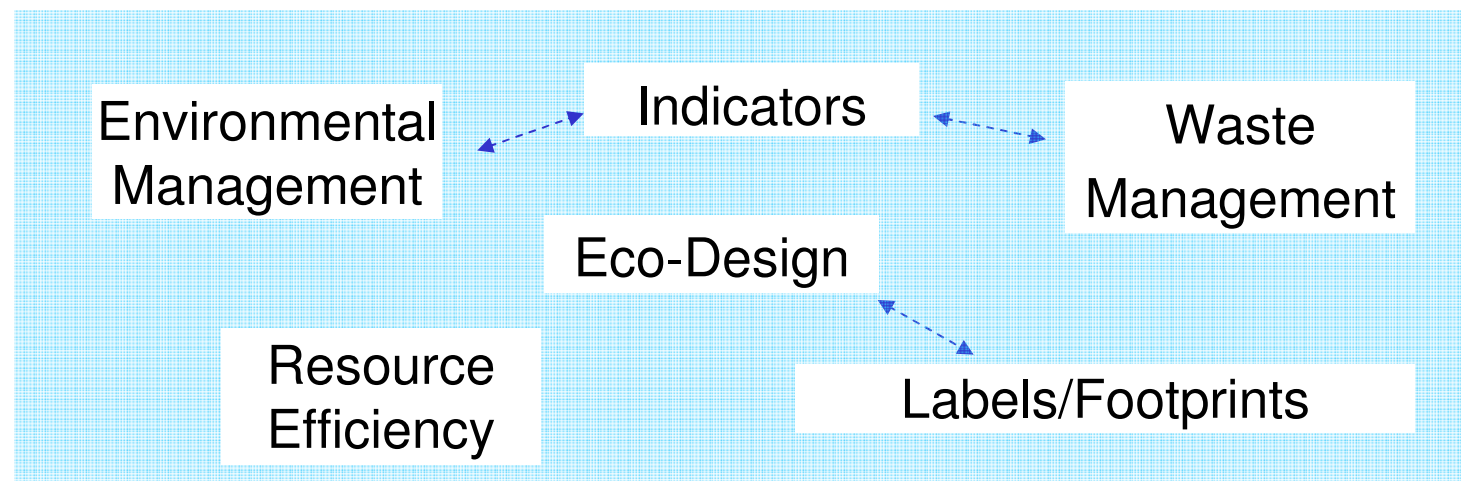


Eutrophication

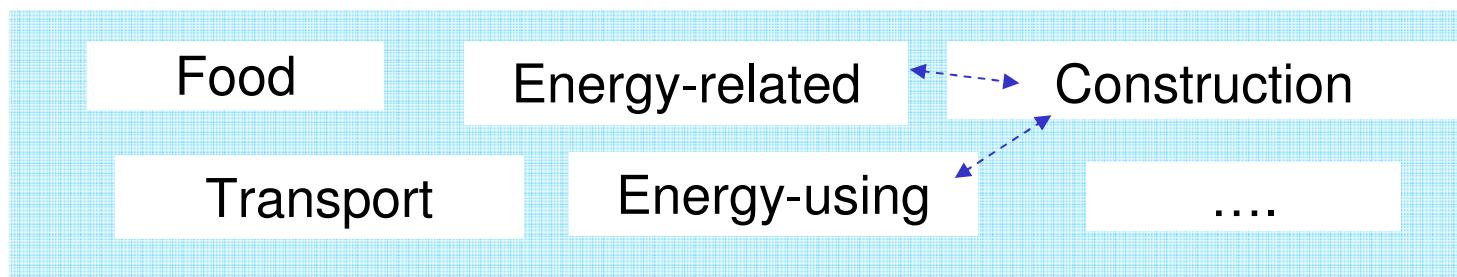


Toxic Pressures

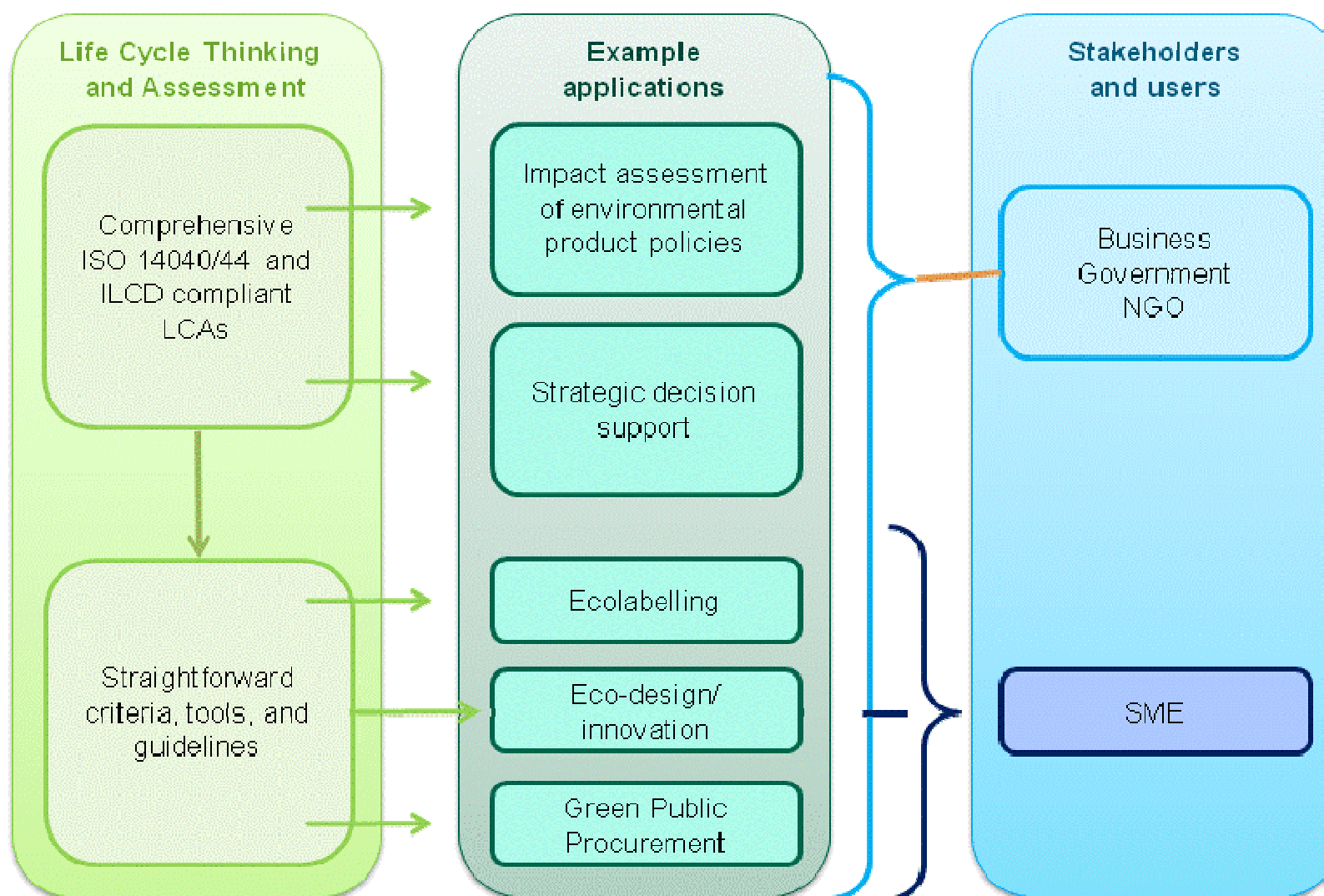
## Application Specific



## Product Group Specific









## Integrated Product Policy Communication (IPP), 2003:

*“LCA is the best framework for assessing the potential environmental impacts of products, but the debate is ongoing about good practice”*

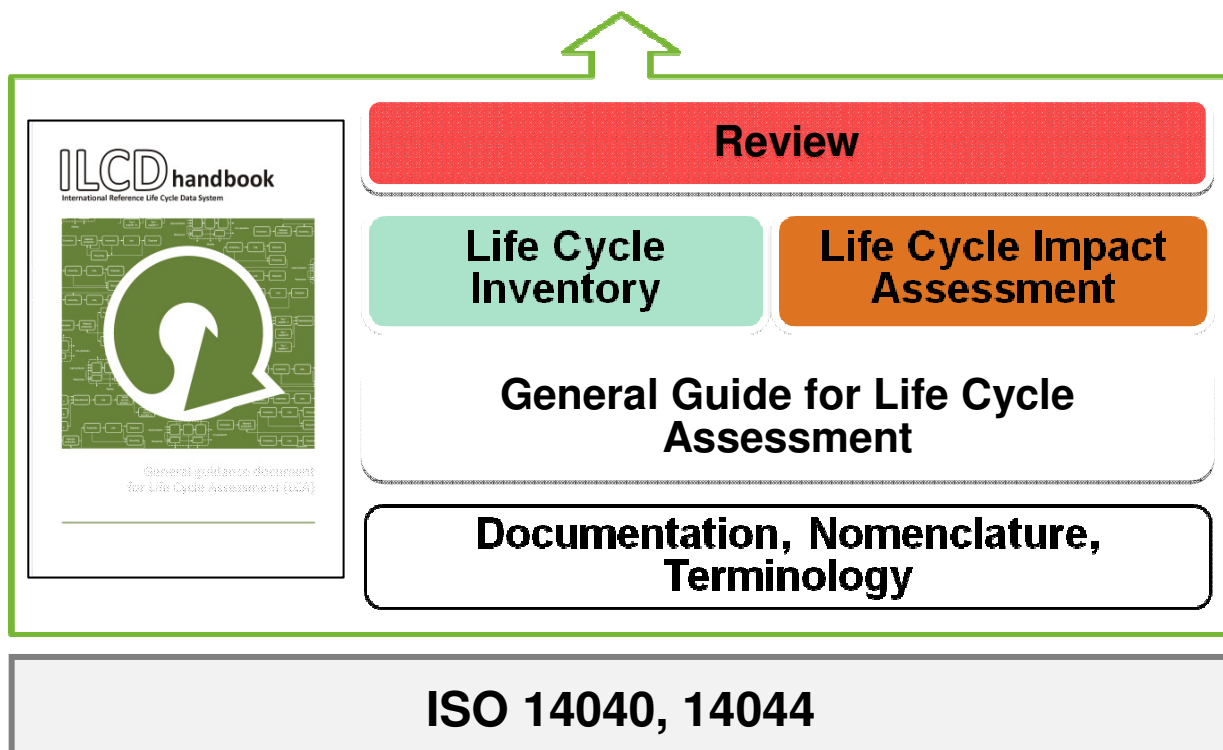
## Sustainable Consumption and Production Action Plan, 2008:

*“To implement this policy, consistent and reliable data and methods are required to assess the overall environmental performance of products ...”*

→ established **European Platform on Life Cycle Assessment**



## Life Cycle Assessment data and studies



Invited consultations



Public consultation & workshops

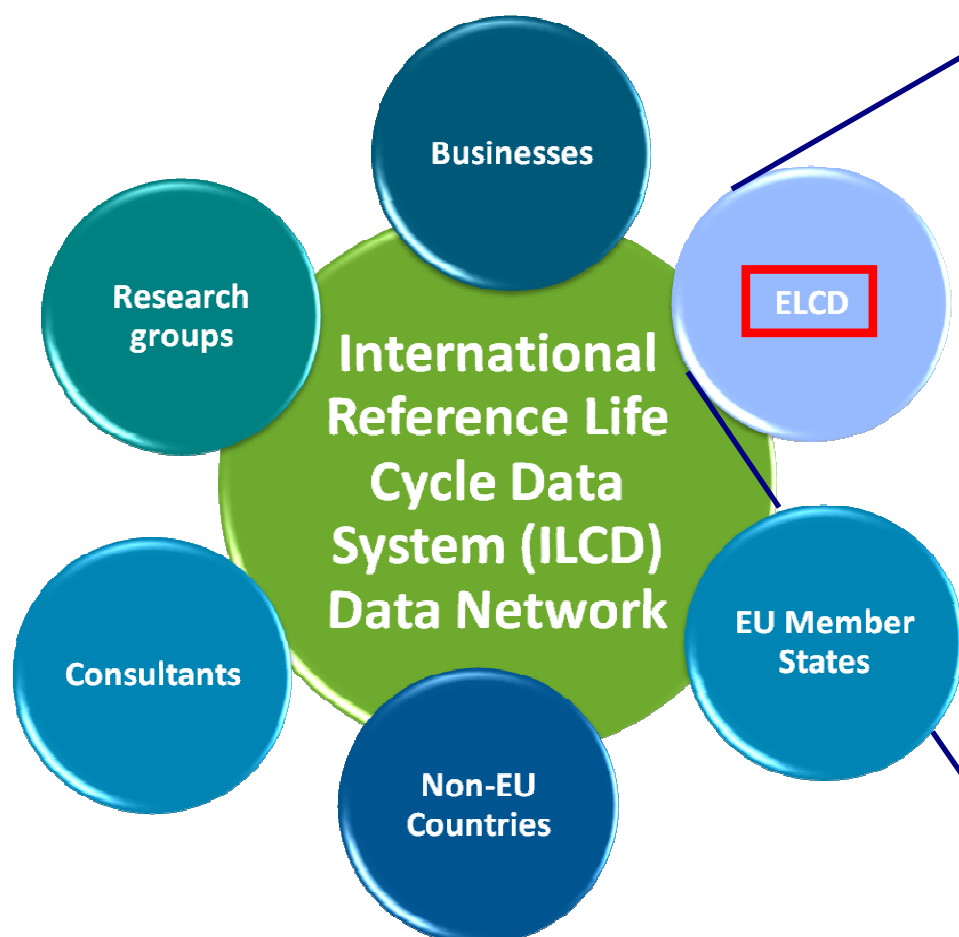


**LAUNCH March 2010**



Review

## International Reference Life Cycle Data System (ILCD) Data Network (*upcoming*)



## European Reference Life Cycle Database (ELCD)

### Content

- 350 data sets , 150 core goods and services, EU market

### Scope

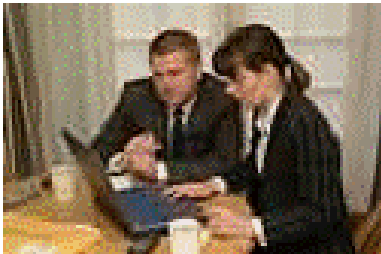
- Core materials, energy , transport, end-of-life services

### Provider



### In preparation





Where to ask for existing studies, post announcements, ...?

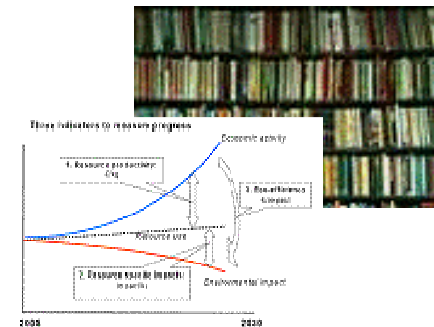
## LCT Discussion Forum

Existing *assessments*, tools, databases, software providers?

## LCA Resources Directory



***Life cycle based monitoring indicators,  
application/product-specific guidelines, ...?***





# European Food Sustainable Consumption and Production (SCP) Round Table



- Official launch:** 6 May 2009 in Brussels
- Working areas:** Methodology, communication, improvement , international
- Food actors:** 23 European food chain organisations (mid - 2010)
- Co-chairs:** European Commission (DGs ENV, SANCO, JRC, ENTR)
- Support:** UNEP, European Environment Agency





## Three Key Objectives:



1. Establish scientifically reliable and uniform **environmental assessment methodologies** for food and drinks
2. Identify suitable **tools and guidance for voluntary environmental communication** to consumers and other stakeholders
3. Promote **continuous environmental improvement** measures along the entire food supply chain;



## The Lead Principle



**Environmental information communicated along the food chain, including to consumers, shall be scientifically reliable and consistent, understandable and not misleading, so as to support informed choice.**





## Ten Guiding Principles



### I - Principles for the voluntary environmental assessment of food and drink products

1. Identify and analyse the environmental aspects at all life-cycle stages.
2. Assess the significant potential environmental impacts along the life-cycle.
3. Apply recognised scientific methodologies.
4. Periodically review and update the environmental assessment.



## Ten Guiding Principles



### **II - Principles for the voluntary communication of environmental information**

5. Provide information in an easily understandable and comparable way so as to support informed choice.
6. Ensure clarity regarding the scope and meaning of environmental information.



## Ten Guiding Principles

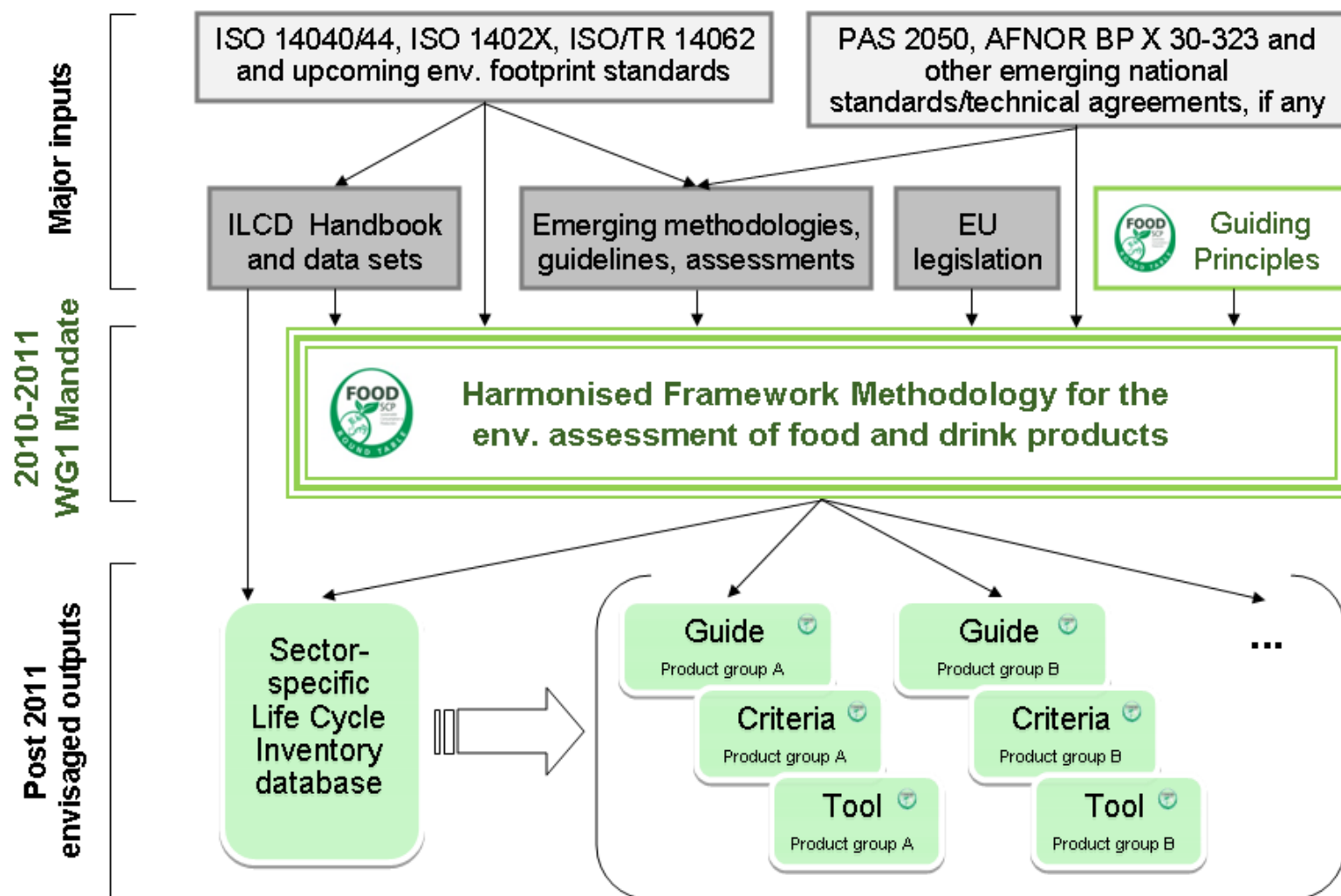


### III - Principles for both voluntary environmental assessment and communication

7. Ensure transparency of information and underlying methodologies and assumptions.
8. Ensure that all food chain actors can apply the assessment methodology and communication tools without disproportionate burden.
9. Support innovation.
10. Safeguard the Single Market (Internal Market) and International trade.



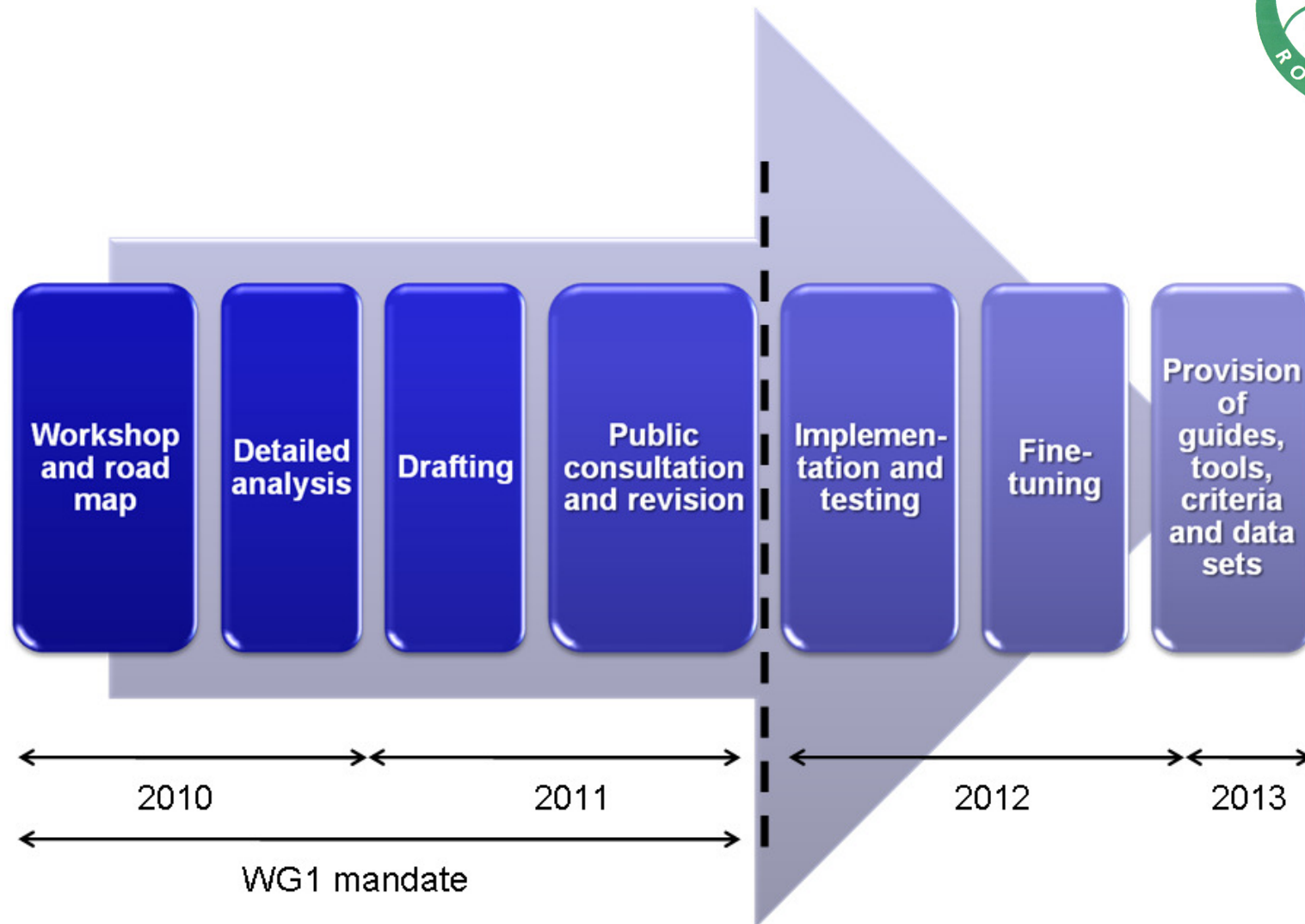
## Working Group 1: Framework Methodology Guidance (draft)







## Working Group 1 Next Steps (draft)





## Involvement of other experts



**Other relevant experts, who do not represent formal member organisations of the RT, are invited to participate in the process whenever their expertise can contribute to a concrete item under consideration.**

- **Relevant experts interested in contributing to the RT's objectives are invited to contact the RT Secretariat –**

**[info@food-scp.eu](mailto:info@food-scp.eu)**

- ✱ Scientifically robust foundations (data, methods, studies, ...)
- ✱ Basis for quality assurance and review
- ✱ Coherent recommendations and requirements
- ✱ Greater availability of quality-assured information
- ✱ Reduced costs
- ✱ Broader stakeholder acceptance

**Towards sustainability through Life Cycle Thinking**



## Further information

### European Platform on Life Cycle Assessment



[LCA@jrc.ec.europa.eu](mailto:LCA@jrc.ec.europa.eu)  
<http://lct.jrc.ec.europa.eu>

### European Food SCP Round Table



[info@food-scp.eu](mailto:info@food-scp.eu)  
<http://www.food-scp.eu/>